

COLLAR

With No. 10 needles, cast on 118 stitches and work 3 rows of ribbing. Increase 1 stitch at each end of 4th row. Repeat these 4 rows 5 times, work 2 more rows without increasing. Cast off.

TO MAKE UP

Sew up side, shoulder and sleeve seams; insert sleeves and sew in collar. Stitch down inside neck-opening and sew

on press-fasteners. With the No. 13 crochet hook, work 1 row of d.c. round edge of collar. Press carefully.

Using 4 strands of the contrasting colours and a large embroidery needle, herringbone up the purl panels of the front with very big stitches, taking in the whole width of the 6 purl stitches. Work the centre one in red, and those on either side in blue, green, yellow, black, and red. Embroider the long sleeves similarly, but ending with one black panel up sleeve seam.

OTHER ATTRACTIVE DESIGNS IN THIS SERIES



SL. 212, price 2d.



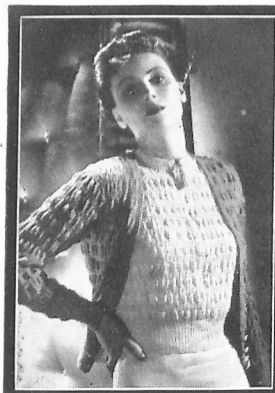
SL. 213, price 2d.



SL. 214, price 2d.



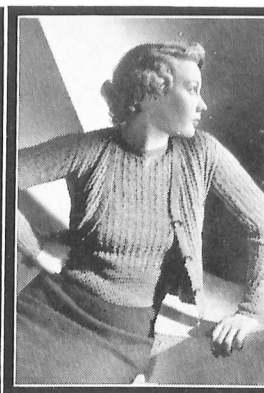
SL. 215, price 2d.



SL.216, price 2d.



SL.217, price 2d.



SL.218, price 2d.



SL.219, price 2d.

STITCHCRAFT, 6d. MONTHLY

The prices quoted apply only in Great Britain and Northern Ireland.

Made and printed in Great Britain, and issued by Patons & Baldwins, Ltd., Knitting Wool Manufacturers.

27128